

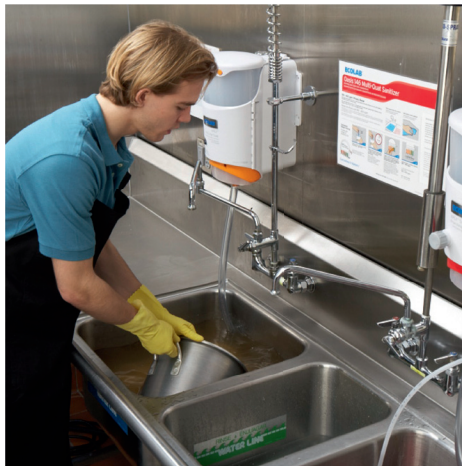


Apex Pot & Pan Soak

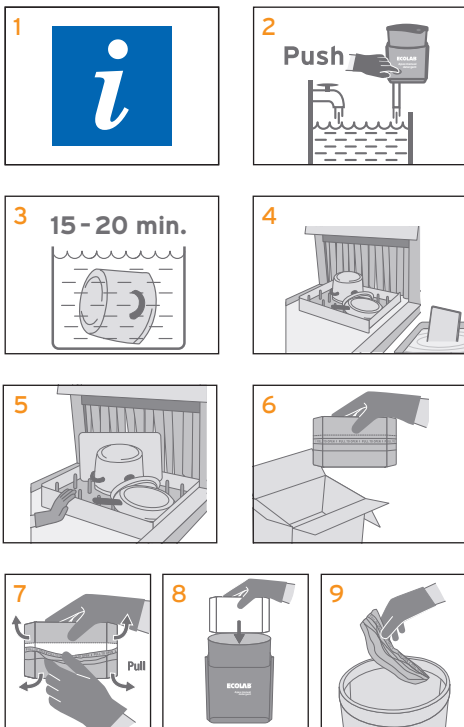
POT AND PAN SOAK DETERGENT FOR PROFESSIONAL WAREWASHING

STOP REWASHING. START SOAKING.

- **Efficiency Matters:** Optimal cost in use. 100% usage, minimal storage and long lasting.
- **Safety Matters:** Easy to handle and refill. Colour and shape coded. Safe for hands at use solution.
- **Sustainability Matters:** Up to 95% less packaging and 70% less transport.
- **Performance Matters:** Removes stubborn stains and soils, even blackened carbonized build-up on ware.



USE INSTRUCTIONS



FOR USE WITH ECOLAB APEX POT AND PAN SOAK DISPENSER

Your Ecolab specialist will adjust the dosing system for your specific cleaning needs.

- 1 Check MSDS for safety advice and hygiene plan and product label for detailed use information
- 2 Push and turn button fully to fill sink with soak detergent and water. Cleaning solution will be orange
- 3 Completely submerge baked-on wares and soak for 15 - 20 minutes
- 4 Remove ware and place on dishmachine rack. Do not rinse
- 5 Run the rack through the dishwasher to wash it
- 6 Check the product level daily and refill if necessary. You do not need to wait until the reservoir is completely empty, as there is space for 1,5 block of Apex Pot & Pan Soak in the reservoir
- 7 Remove the plastic foil from detergent block
- 8 Refill dispenser
- 9 Dispose of plastic foil via standard waste

SPECIAL NOTES / INFORMATION

Your operation is set up to run pots and pans through the dish machine. It saves time and labour. However, rewashing is time consuming and expensive.

Remove greasy, baked-on soils in one pass by soaking them in Apex Pot & Pan Soak.

For professional use only

SAFETY

For further information and safety instructions, see product label and Safety Data Sheet.

STORAGE CONDITIONS

Store between 0 and 40 °C in original closed container only.

PACK SIZE

3 x 2,27 kg block